

# INSTALLATION INSTRUCTIONS

## CRL SECURITY SCREEN SLIMLINE HINGED DOOR



---

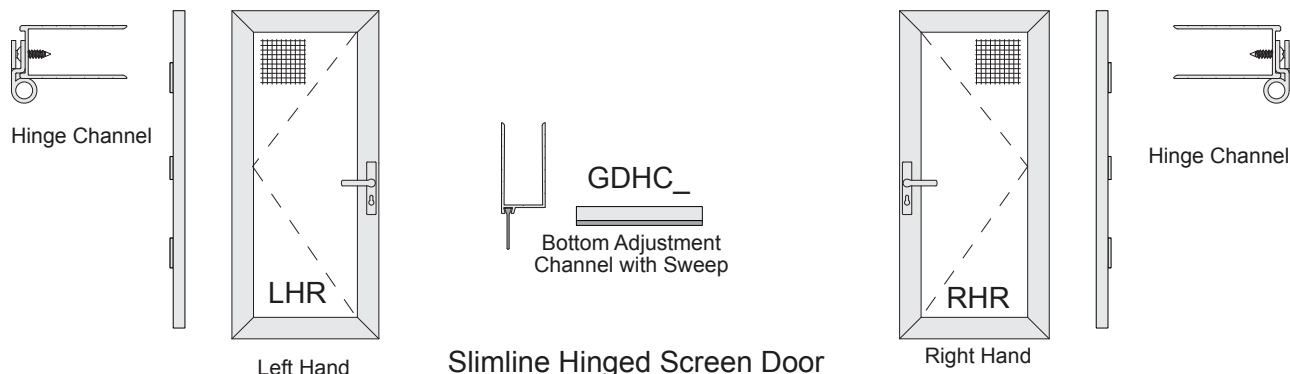
Phone: (800) 421-6144 • Fax: (866) 921-0531  
crlaurence.com • usalum.com • crl-arch.com

---

11M0279\_Rev B\_9-10-18

# MODEL IDENTIFICATION

All CRL Security Screen Slimline Hinged Doors are fabricated specifically for each order and shipped fully assembled. The security screen is attached to the jamb of the existing door. Inside Mount only.



# RECOMMENDED FASTENERS

T20 Bronze Star Exterior Coated Screws are recommended for all CRL Security Screen installations.



**IMPORTANT: READ THIS MANUAL THOROUGHLY BEFORE BEGINNING INSTALLATION**

# ORDER OF ASSEMBLY AND INSTALLATION

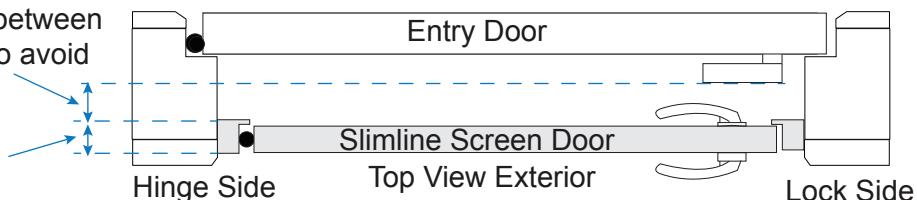
Model Identification .....	2
Recommended Fasteners .....	2
Preparation .....	2
Installation .....	3 - 6
Measure Opening and Prepare Hinge Channel .....	3
Install Hinge Channel .....	3
Slide Screen Door into Hinge Channel .....	3
Center Screen Door in Opening and Secure .....	4
Prepare Bottom Adjustment Channel .....	4
Install Bottom Adjustment Channel and Trim Bottom Sweep .....	5
Mark Bolt Position .....	5
Install Strike Plates .....	6
Test .....	6

# PREPARATION

## Check Mounting Area

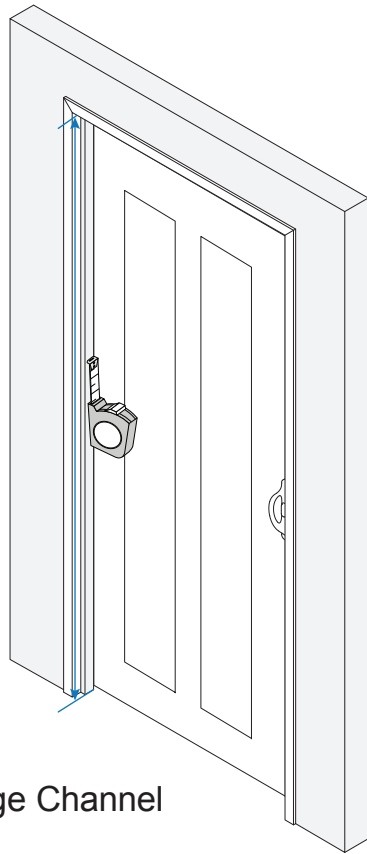
Allow 2-5/8" (67 mm) minimum space between entry door handle and mounting area to avoid hardware interference.

Allow 1" (25 mm) minimum space for mounting area.

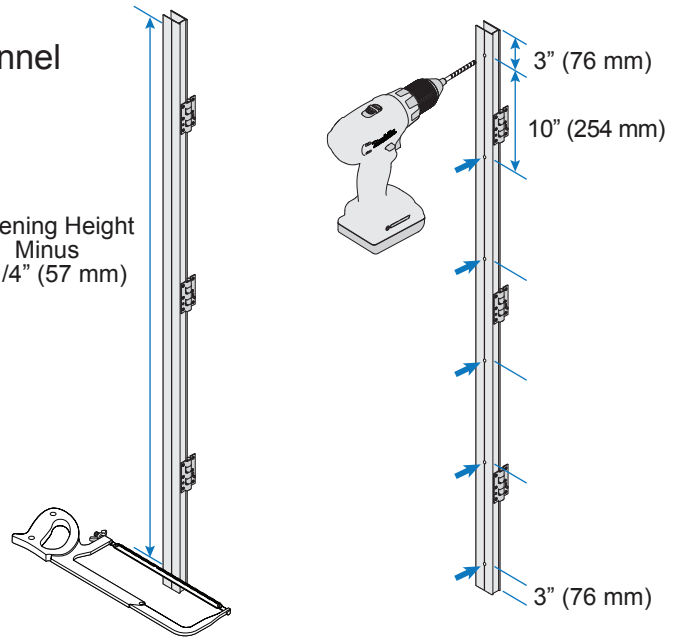


# INSTALLATION

## 1. Measure Opening and Prepare Hinge Channel

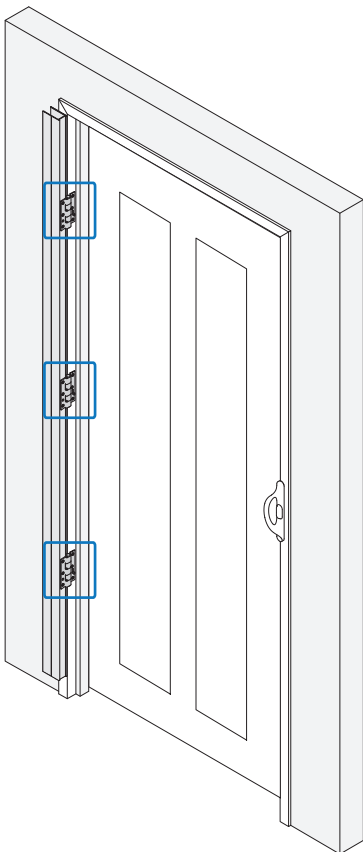


Opening Height  
Minus  
2-1/4" (57 mm)

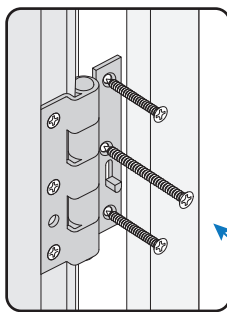


Cut Hinge Channel to that length and drill pilot holes every 10" (254 mm) and 3" (76 mm) from each end.

## 2. Install Hinge Channel

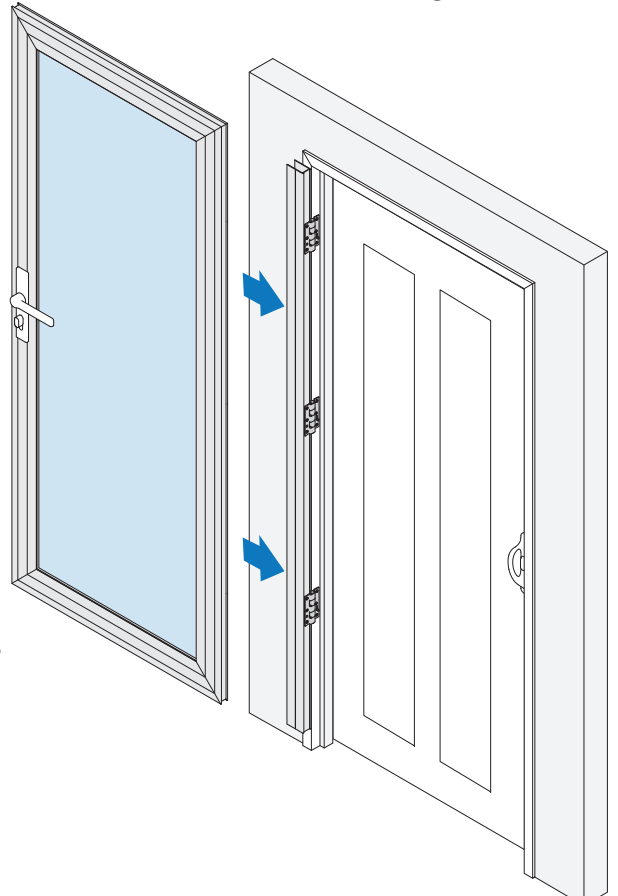


Fasten hinges to door jamb  
with provided screws.



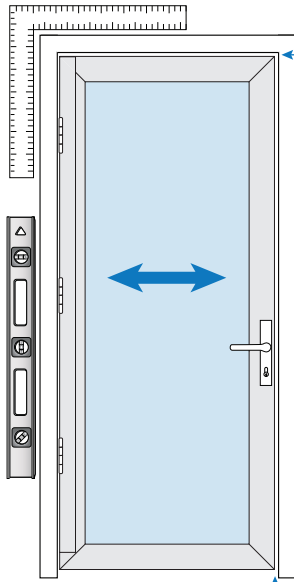
NOTE: For additional security  
we recommend using a screw  
long enough to reach the studs  
in wall (one per hinge).

## 3. Slide Screen Door into Hinge Channel

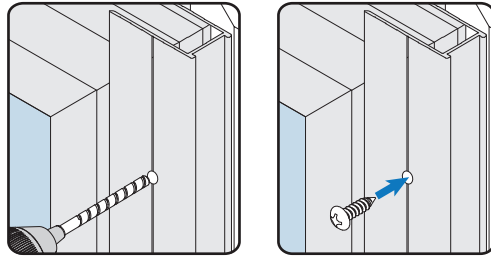


# INSTALLATION (CONTINUED)

## 4. Center Screen Door in Opening and Secure



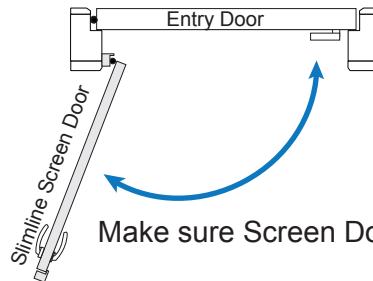
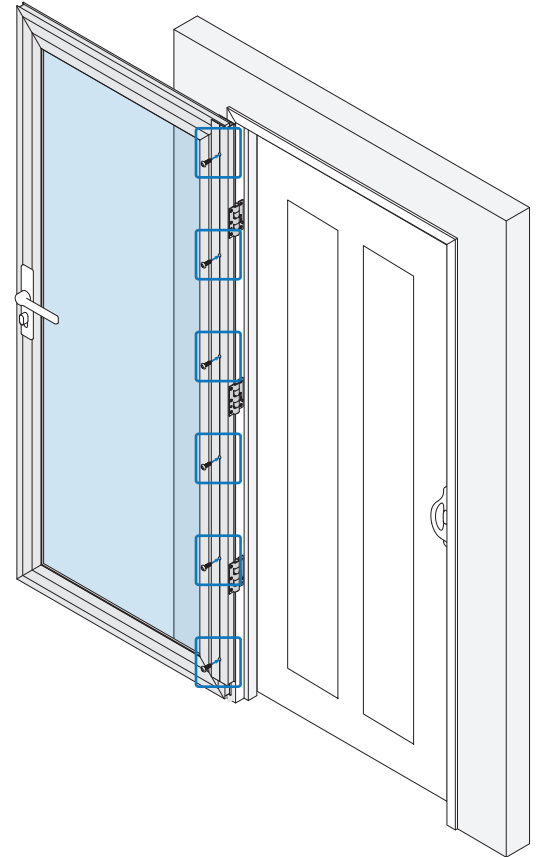
Leave 1/8" (3 mm) Gap at Top



Match drill Hinge Channel pilot holes. Attach to door with included screws.

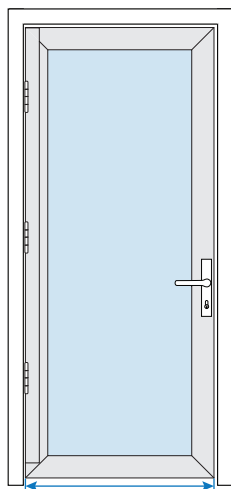
NOTE: Fasten with one screw, then check door alignment.

Leave 1/8" (3 mm) Gap at Lock Jamb

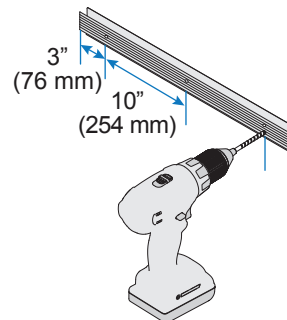
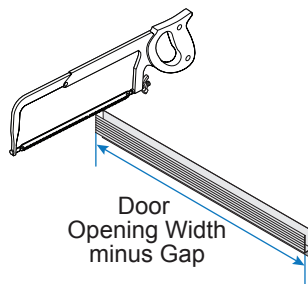


Make sure Screen Door opens and closes freely.

## 5. Prepare Bottom Adjustment Channel



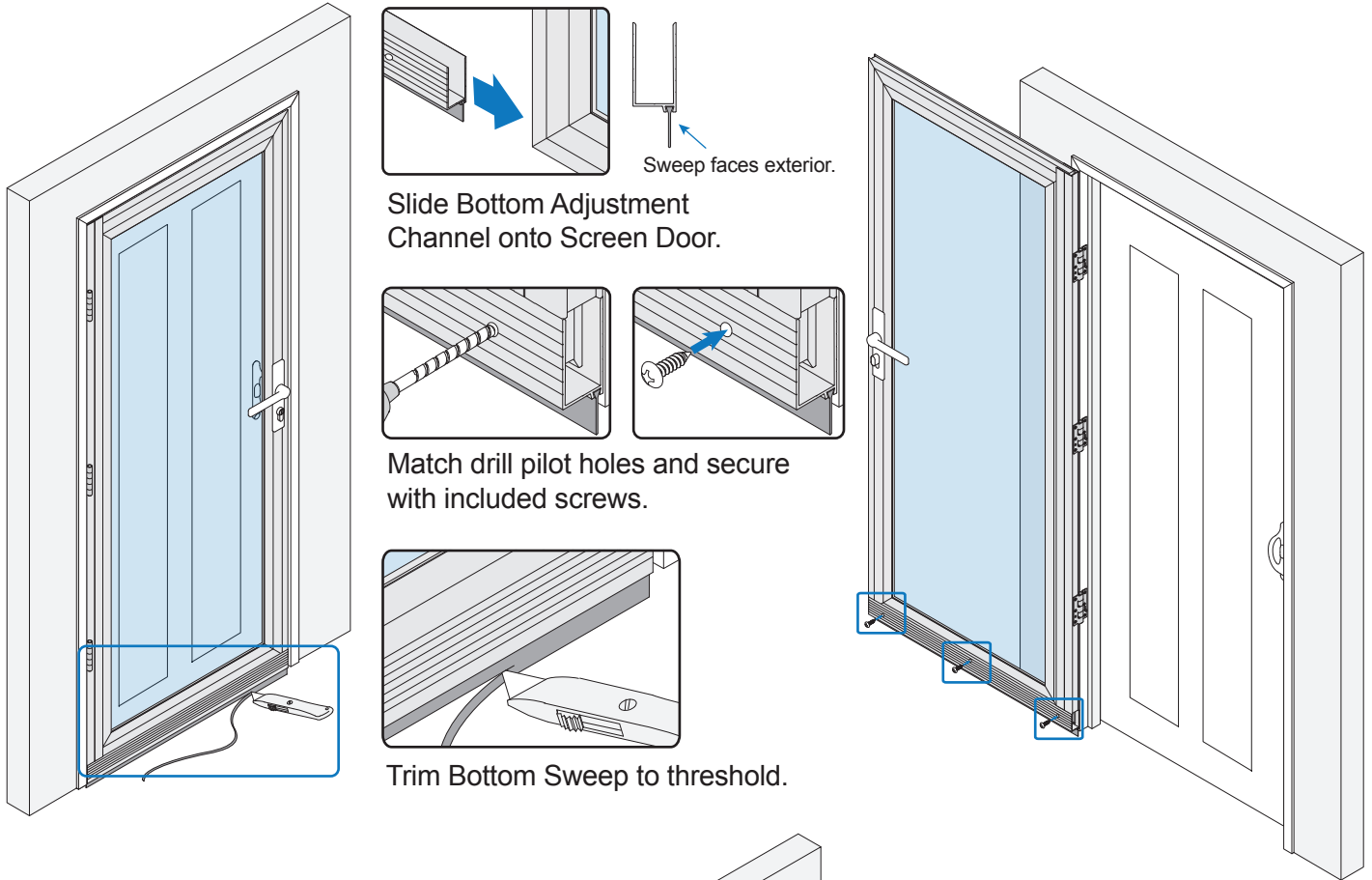
Door Opening Width minus Gap



Cut Bottom Adjustment Channel to length. Drill pilot holes every 10" (254 mm) and 3" (76 mm) from each end.

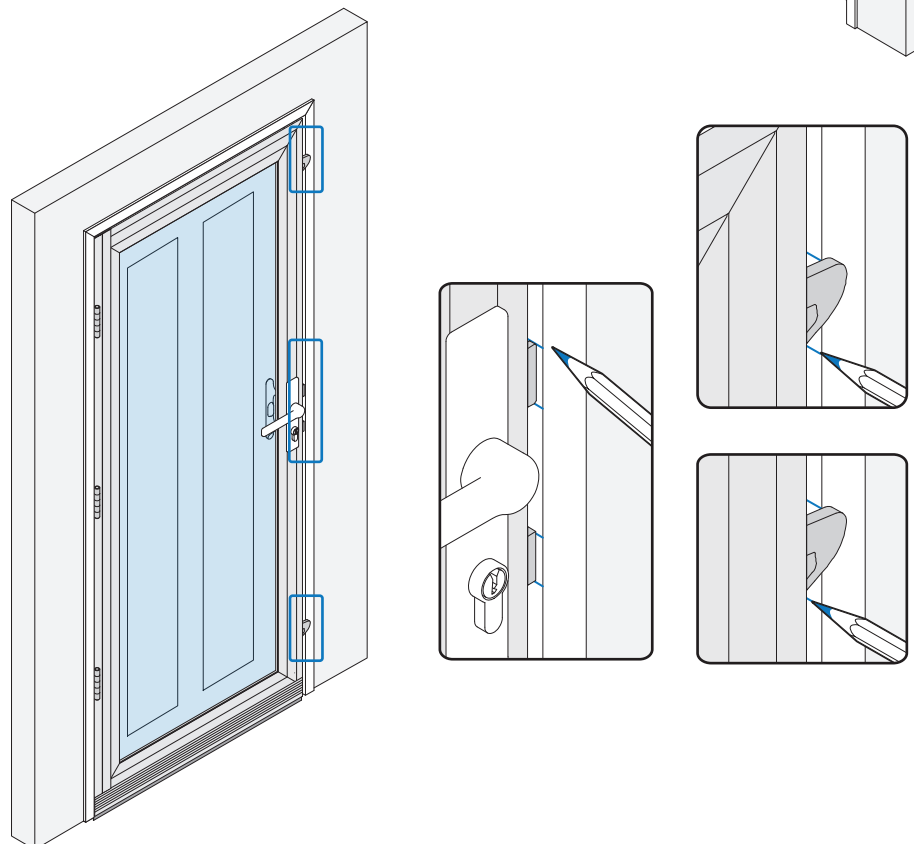
# INSTALLATION (CONTINUED)

## 6. Install Bottom Adjustment Channel and Trim Bottom Sweep



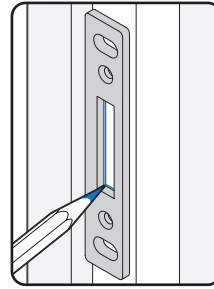
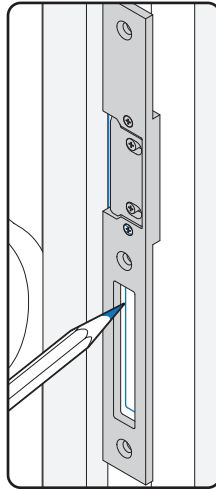
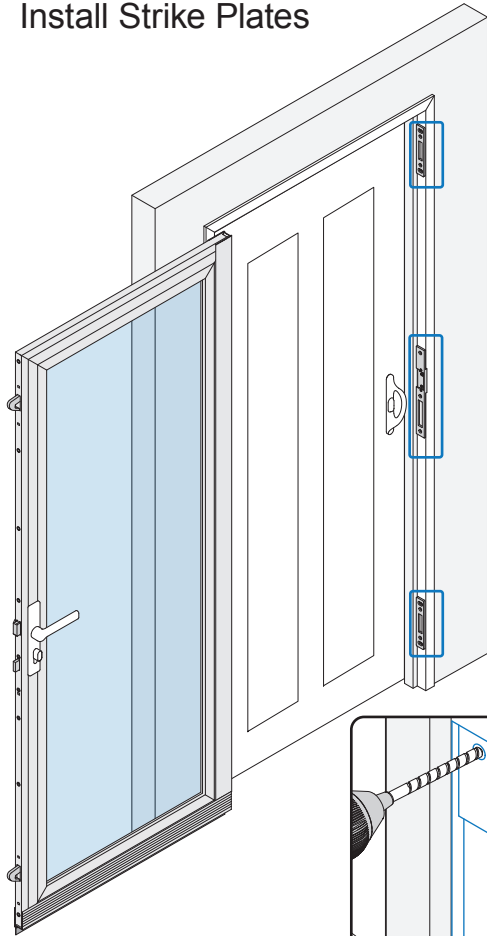
## 7. Mark Bolt Position

Close Screen Door with locks engaged and mark locations where top, lockset, and bottom bolts will engage door jamb.



# INSTALLATION (CONTINUED)

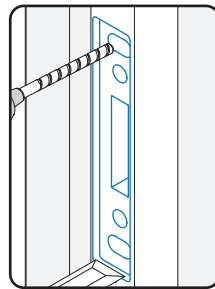
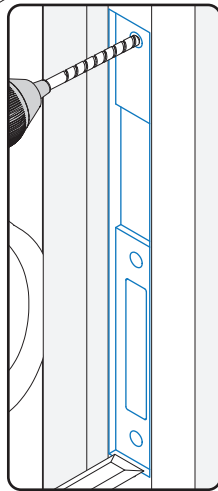
## 8. Install Strike Plates



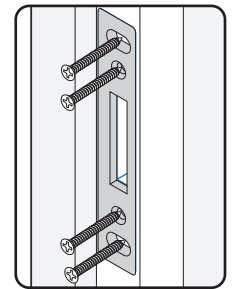
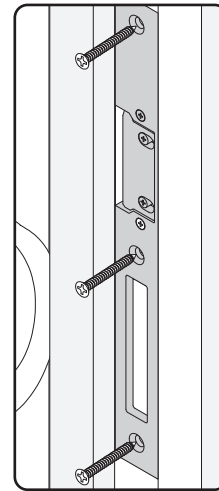
NOTE: Bottom and top bolts use same Strike Plate.

Open Screen Door and align Strike Plates so bolt cut outs are centered to bolt locations and trace.

NOTE: Chisel out slightly larger area than marked to allow for adjustment if necessary.



Clean latch hole areas with chisel to accept bolts. Drill 7/64" pilot holes at mounting holes.



Install Strike Plates with screws provided.

## 9. Test

Make sure Screen Door opens and closes freely and deadbolts fully engage.

